



TO COUNCILLOR:

Mrs R H Adams
G A Boulter

F S Ghattoraya
J Kaufman (Chair)

Mrs L Kaufman

Dear Sir or Madam

I hereby **INVITE** you to attend a meeting of the **HEALTH AND WELLBEING BOARD** to be held **BY REMOTE VIDEO CONFERENCE** on **TUESDAY, 18 JANUARY 2022** at **1.30 PM** for the transaction of the business set out in the Agenda below.

Yours faithfully

Council Offices
Wigston
08 December 2021

Mrs Anne E Court
Chief Executive



<u>ITEM NO.</u>	<u>AGENDA</u>	<u>PAGE NO'S</u>
1.	Welcome by Chairman, Councillor Jeffrey Kaufman	
2.	Apologies for Absence	
3.	Minutes of the Previous Meeting	3 - 6
4.	Vaccine Update –Jennifer Mackenzie, Oadby and Wigston Borough Council	
5.	Health Inequalities in OWBC – Kayal Lad and Jenna Parton, Public Health	
6.	Update from Everyone Active – James Naylor, Everyone Active	
	a. Post-Covid Recovery	
	b. Community Development Plan	
7.	Update from Locality Leads – Sue Renton, Oadby and Wigston PCN GP Surgeries	
8.	Any Other Business	
9.	Date of Next Meeting	

For more information, please contact:

Community & Wellbeing Manager



Postal Address: Council Offices, Station Road, Wigston, Leicestershire LE18 2DR

Refuse & Recycling Centre: The Depot, Wigston Road, Oadby, Leicestershire LE2 5JE

Tel: (0116) 288 8961 **Fax:** (0116) 288 7828 **Email:** csc@oadby-wigston.gov.uk



oadby-wigston.gov.uk

~ Page 1 ~



OadbyWigstonBC



@Oadby_Wigston

Oadby and Wigston Borough Council
Council Offices
Station Road, Wigston
Leicestershire
LE18 2DR

t: (0116) 257 2651
e: andrew.dingley@oadby-wigston.gov.uk

**You can access all available public meeting documents
and audio-visual live streams and recordings electronically on:**



Our website **oadby-wigston.gov.uk** under
'Your Council' and
**'Meeting Dates,
Agendas & Minutes'**



Your smart **iPad**,
Android or
Windows tablet
device with the
'Modern.Gov' app



Our **YouTube** Channel
ow.ly/FYQW50zDNkc
or smart device with the
'YouTube' app
(facilitated by **'Zoom'**)



Our audio platform
**[soundcloud.com/
oadbywigstonbc](https://soundcloud.com/oadbywigstonbc)** or
smart device with the
'SoundCloud' app

MINUTES OF THE MEETING OF THE HEALTH AND WELLBEING BOARD HELD BY REMOTE VIDEO CONFERENCE ON TUESDAY, 19 OCTOBER 2021 COMMENCING AT 1.30 PM

PRESENT

J Kaufman Chair



COUNCILLORS

Mrs R H Adams
J W Boyce
Mrs L Kaufman

OFFICERS IN ATTENDANCE

D M Gill Head of Law & Democracy / Monitoring Officer
R Levy Community & Wellbeing Officer
Ms J Mackenzie Community Health Improvement Officer
Ms L Mugridge Community & Wellbeing Officer

OTHERS IN ATTENDANCE

S Renton Oadby & Wigston PCN
J Baraclough Leicestershire County Council
M Flynn Leicestershire County Council
H Khan School Sports Partnership, LSLSS
N Patel Leicestershire County Council
J Pick Community Representative
S Vallance Leicestershire CCG
S Jagot GP Social Prescribing Link Worker

17. WELCOME BY CHAIRMAN, COUNCILLOR JEFFREY KAUFMAN

18. APOLOGIES FOR ABSENCE

Councillor F S Ghattoraya
Councillor G A Boulter
Hema Jesa
Andrew Dingley

19. MINUTES OF THE PREVIOUS MEETING

Chair noted that the invite list is out of date and needs updating.

Page 1, Item 11 – Health Inequality information: Cllr J Kaufman: FIGURES of life expectancy health equalities. Not actioned. Chair noted this was to be shared and discussed at the next board.

Page 2, Item 12 - ACTION: Helping Hands service and contact details to be shared with Councillors and PCNs. Not actioned. Chair noted that minutes from previous boards were unsigned in person. D Gill stated he had minutes of previous meetings. The minutes of the meeting of the HWBB held on the 6 July to be taken as read, confirmed and signed by the Chair.

20. VACCINATION LOCAL UPDATE

J Mackenzie provided an update of the vaccination uptake in Oadby and Wigston.

Oadby North and East have the lowest uptake at 76.7 %, and Wigston Harcourt and Little Hill has the highest at 86.2 %. The age group of 25-29 has the lowest uptake at 59.1 % across the Borough. Highest uptake for age is 60+.

After identifying the low vaccination uptake in the area across all age groups. The Community and Wellbeing team and other members of council distributed leaflets and posters to all the business and organisations on South Wigston high street and leaflets drops to houses in the local area. A vaccination site in South Wigston was held in August, hosted at North Warwickshire and South Leicestershire College with a total of 571 people vaccinated over the course of 3 days.

The Community and Wellbeing team are also supporting Leicester County Council in hosting the vaccine testing van across Oadby and Wigston. The vans perform on site testing, distribute take home kits and welfare packs. Take up has been positive in Oadby and Wigston. Dates of the vans are detailed in member bulletin.

Ongoing work includes regular pop-ups in public areas focused on Covid-19, testing, vaccines and providing accurate information. The Councils and Active Oadby and Wigston social media channels support a variety of Covid-19 information campaigns. Health and wellbeing, Covid 19 and vaccine information has been distributed in housing blocks and flat communal boards and areas. Covid-19 advice and information is updated in our community newsletters. The Community and Wellbeing team are hosting a Covid-19 and Vaccine information pop-up in Wigston on the 20th October in response to recent letters in the post. Information is also disseminated through Community Health Champion Programme.

Cllr Lily Kaufman asked if the booster vaccination was included in the statistics. – J Mackenzie responded that they do not have the data of the booster vaccines yet.

Cllr Boyce noted that with the vaccination clinic in South Wigston, the statistics do not represent an increase in vaccine uptake and that the Borough has a real problem with vaccination. - J Mackenzie responded that people could come from anywhere for the vaccination clinic in South Wigston. Chair asked regarding the low vaccine uptake in Oadby North and East whether it is the students who are unvaccinated. **ACTION:** J Mackenzie to confirm uptake for ages. Cllr Boyce suggested that we need to target younger people as the data shows they have low vaccine uptake. Suggested if anything could be with schools in the worst Covid 19 affected wards. S Renton stated the difficulties for setting up a pop up vaccine site including the logistical difficulties. Commended work J Mackenzie did with other partners. S Jagot noted that chemist in Oadby provided vaccines. Chair suggested we contact the chemist and shops in Oadby north and east. Also suggested about the pharmacies in South Wigston and what contribution they may be able to add to vaccine uptake. **ACTION:** J Mackenzie and S Renton to contact the chemist and shops in Oadby north and east. Cllr Rosemarie mentioned she had received vaccine out of the Borough, was this reflected in our vaccination statics because she lives within Borough. J Mackenzie said it did. S Renton noted that the booster was well received in the Kube.

21. COMMUNITY CHAMPIONS UPDATE

R Levy introduced himself as a Community Health Improvement Officer. R Levy updated on the recent progress of the Community Health Champion programme. R Levy explained that

the programme works towards an evidence base approach. The volunteers are representative of the Borough and hold a variety of different skill set. For example, for the campaign of Stoptober, they utilised a volunteer who has skills in graphic design to design graphics and media. Co-produce programmes with volunteers.

Since August, the Community and Wellbeing team have hosted or supported in 13 community events. With LCC or own pop ups. They have used recruited champions to assist with this, promoting mental and physical wellbeing. R Levy also provided information about other local programmes, such as group and 1-1 walks. Also noted partnerships and collaboration with both internal and external partners. Chair asked how many Community Health Champion volunteers we have. R Levy responded with 8, but they are diverse and reflective of the borough.

Chair asked if this is related to volunteers that are recorded in member's bulletin. R Levy confirmed that those are volunteers that support with the Community Hub. Cllr L Kaufman expressed how impressed she was with enthusiasm of the team and other partners from Safety First event that took place Monday 18th at Salvation Army. Chair mentioned that did not quite get the numbers for Safety First event, but still successful. R Levy thanked everyone for their interest and respect.

22. OADBY AND WIGSTON LOCALITY LEADS UPDATE

S Renton provided an update on the Oadby and Wigston Locality group.

The 6 surgeries in the PCN include Bushloe Surgery Wigston - Wigston Central - Oadby Central - South Wigston Health Centre - Rosemead Drive, Oadby and Spectrum Health Surgery, Oadby.

The locality group engages with partner organisations who have existing engagement with target audiences and residents. The group is aims to meet needs of residents. The group had started from a health inequalities workshop through Covid 19. It continued and the group met informally for many months. It has now adopted a more formal approach.

The proposed terms of reference will be discussed at the next Locality meeting. The purpose of the group aims to support the wellbeing of individuals through creating a healthy community through partnership working. The group will now be called the Oadby and Wigston Integrated Leadership team. The group formally meet on Thursday, every month. Will ensure efforts of those reflected and will feedback to board and members.

23. ANY OTHER BUSINESS

J Mackenzie advised Public Health will be in attendance next meeting to provide information on health inequalities. Chair asked for opinions and feedback about members meeting face to face. Asked whether the next meeting should be in person. S Renton mentioned it was good to see people yesterday at safety first, would like to advocate to meet in person. Cllr Rosemarie noted internet struggles, online is impersonal, would rather have face to face. Chair asked whether the current meeting time is the best time of day for members. Cllr Boyce stated it is important to get the right people here. Suggested that the NHS and Public Health should be in attendance. Cllr L Kaufman noted that if public health are invited, need to ensure that in person meeting is Covid-19 safe and adhere to number restrictions. Highlighted the need to be flexible.

Cllr Boyce stated online meeting would improve inclusivity if timing is right. Need to consider that if group returns to face to face, it may effect working practice people have adopted. Noted he would prefer to continue online. Suggested middle of next year 2022.

24. DATE OF NEXT MEETING

Monday, 18 January 2022.

THE MEETING CLOSED AT 2.12 PM



Chair

Tuesday, 18 January 2022

*Printed and published by Community & Wellbeing, Oadby and Wigston Borough Council,
Council Offices, Station Road, Wigston, Leicestershire, LE18 2DR*



**Leicestershire
County Council**

Oadby and Wigston

Health Inequalities

~ Page 7 ~

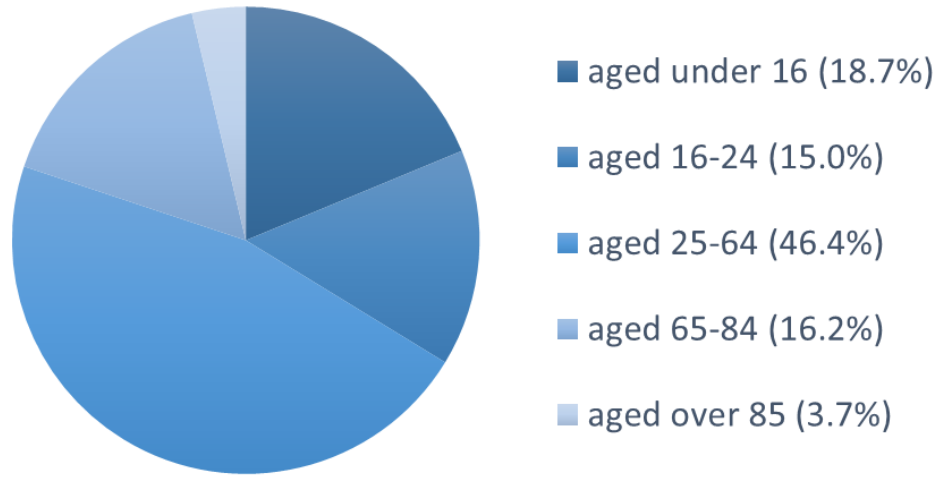
Agenda Item 5

Kajal Lad - Public Health Business Partner

Jenna Parton – Strategic Lead for Wider Determinants of Health

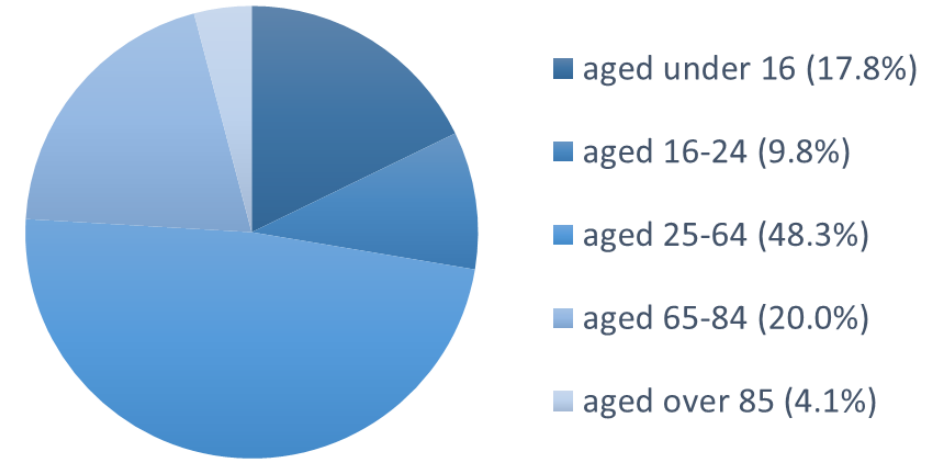
Population

Oadby - 2020

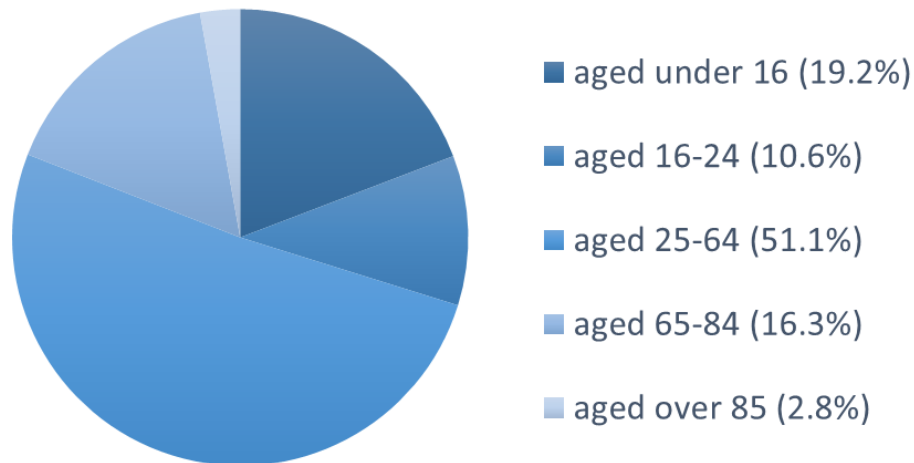


Wigston - 2020

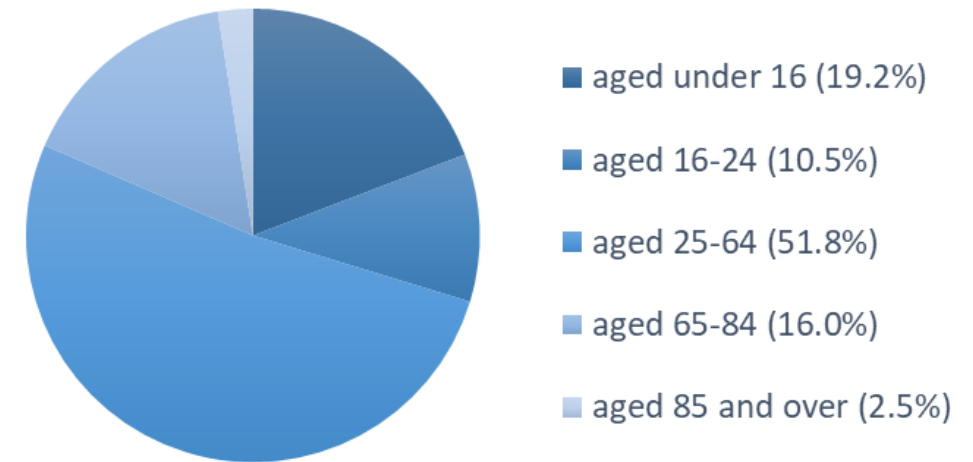
Excluding South Wigston



South Wigston – 2020



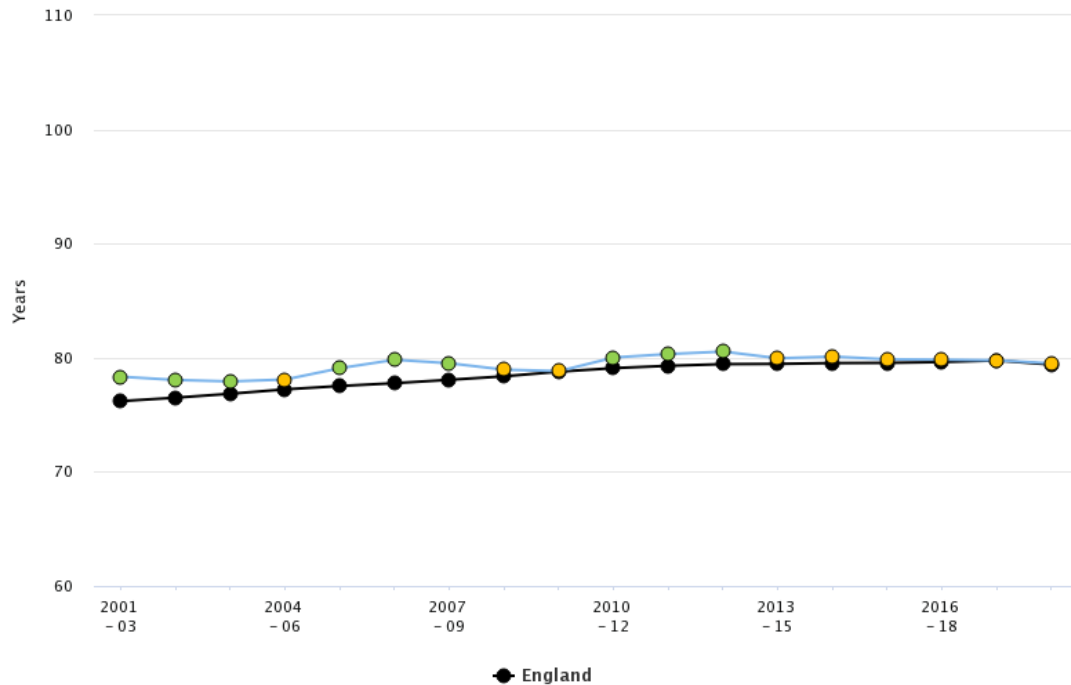
England - 2020



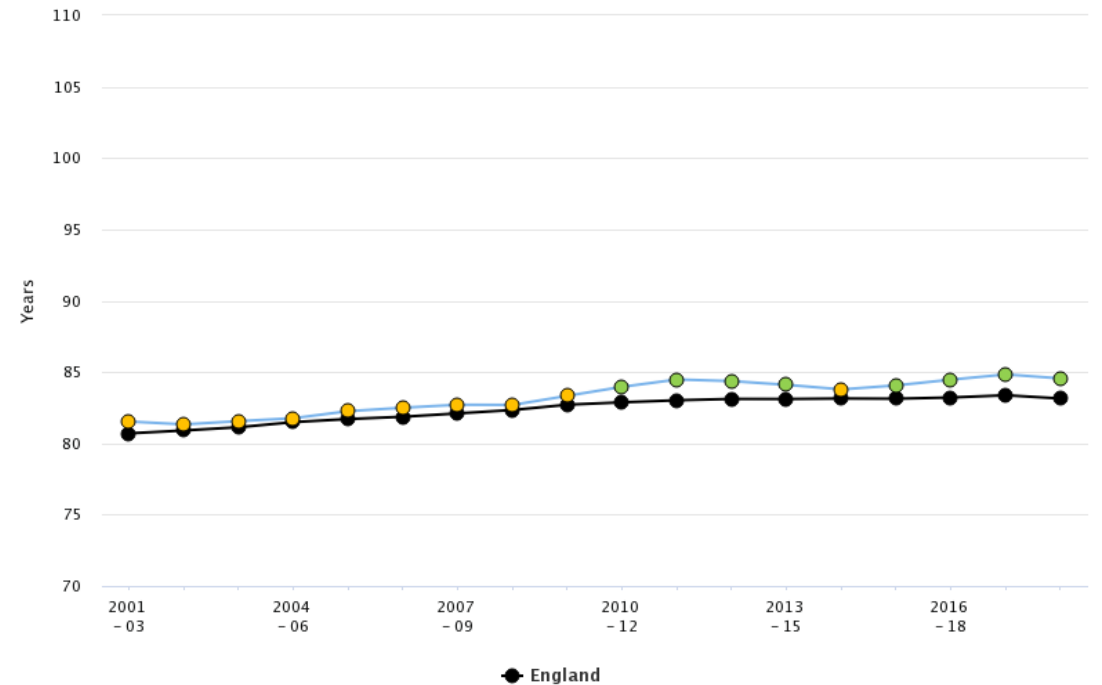
Life expectancy at birth

- The charts below show trends in life expectancy at birth in Oadby and Wigston for males and females.
- Latest data (2018-20) for life expectancy at birth for males (79.5) performs similar to the national average (79.4).
- In 2018-20, life expectancy at birth for females (84.6) performs significantly better than the national average (83.1).

Life expectancy at birth (Male) for Oadby and Wigston

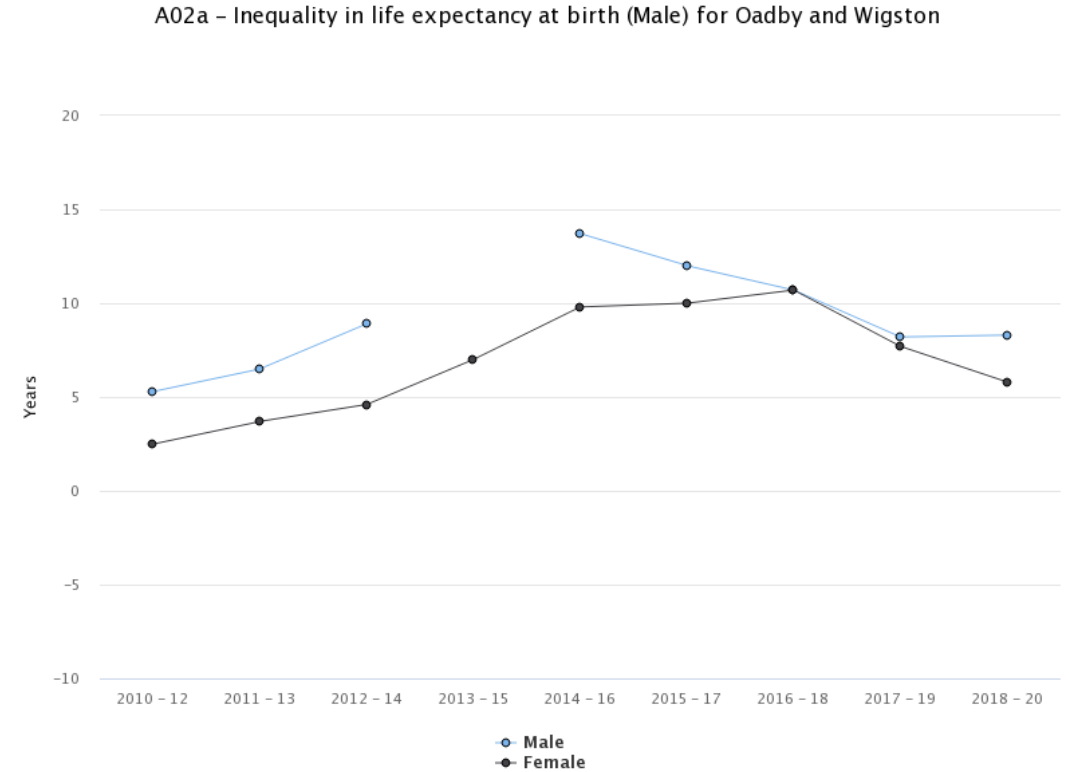


Life expectancy at birth (Female) for Oadby and Wigston



Trend in Inequality of Life expectancy at birth

- The inequality in life expectancy examines the range in years of life expectancy across the social gradient (from most to least deprived areas) within each local authority.
- Nationally, the inequality in life expectancy at birth is 9.7 years in males and 7.9 years in females in 2018-20.
- As at 2018-20, Oadby and Wigston has the 129th largest inequality in male life expectancy at birth in England, at 8.3 years. There has been an increase of 0.1 years since 2017-19, where the gap was 8.2 years.
- In females, the overall inequality is smaller at 5.8 years and represents the 164th largest inequality in the country. This is a decrease of 1.9 years from 7.7 years in 2017-19.

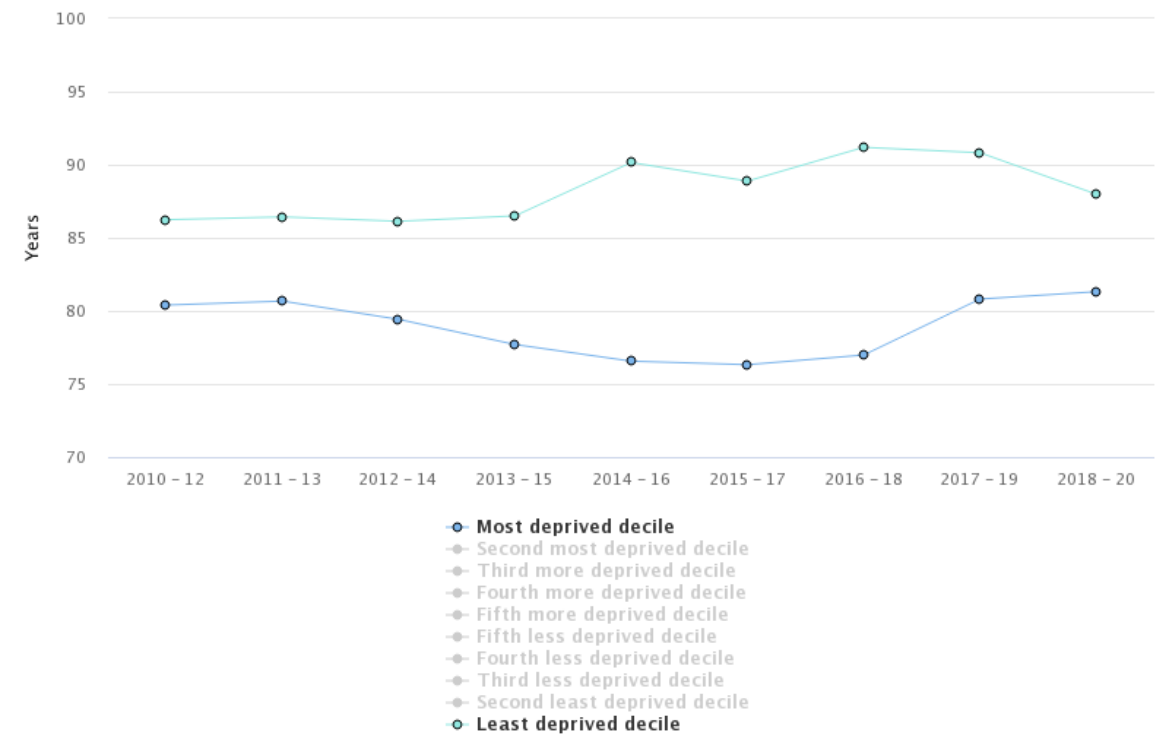


Inequality of Life expectancy at birth

A01b – Life expectancy at birth (Male, 3 year range) for Oadby and Wigston



A01b – Life expectancy at birth (Female, 3 year range) for Oadby and Wigston



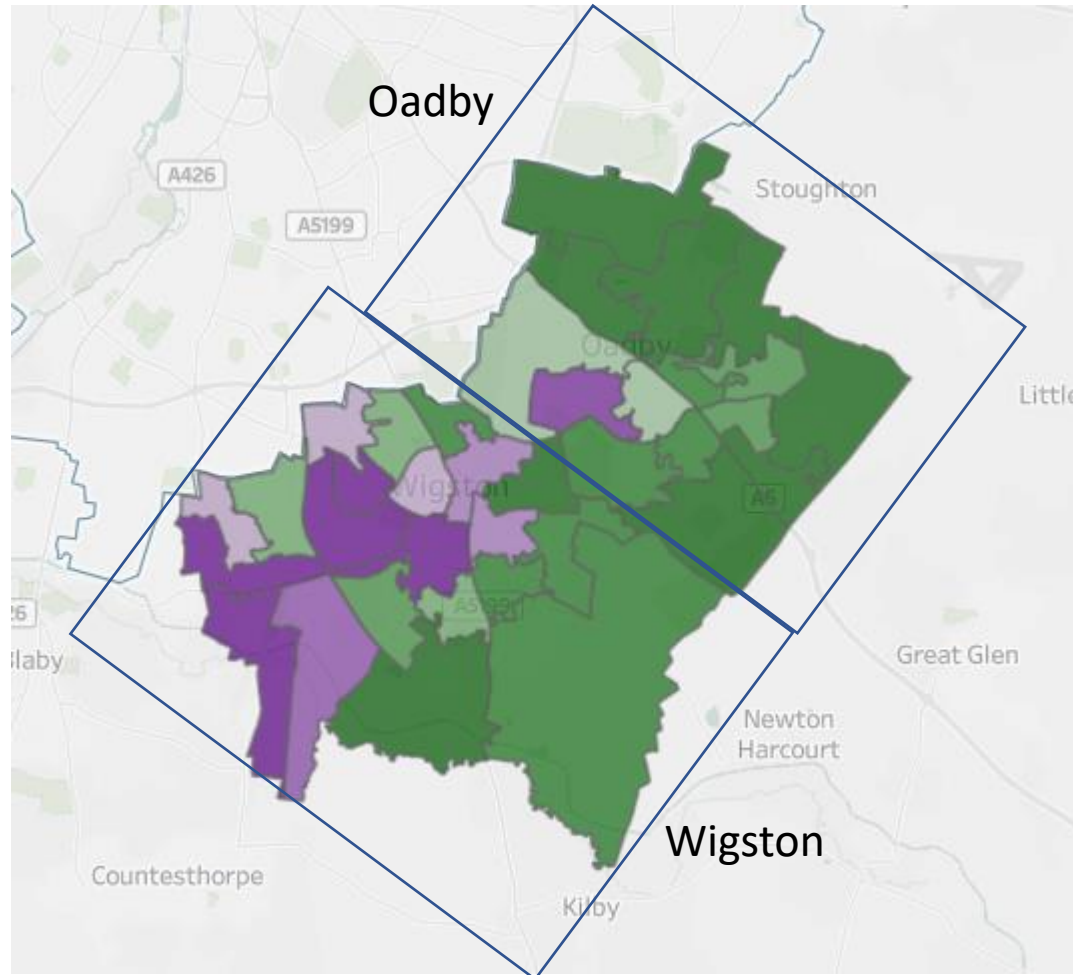
- In males, life expectancy in the **least** deprived decile **has decreased from 84.7 years in 2017-19 to 81.7 years in 2018-20**
- In the same time period in the **most** deprived decile, life expectancy at birth in males **has decreased from 74.4 years to 73.2 years**
- In females, life expectancy in the **least** deprived decile **has decreased from 90.8 years in 2017-19 to 88.0 years in 2018-20**
- In the same time period in the **most** deprived decile, life expectancy at birth in females **has increased from 80.8 years to 81.3 years**

What is deprivation and how is it calculated?

- The IoD2019 is based on 39 separate indicators, organised across seven distinct domains of deprivation which are combined and weighted to calculate the Index of Multiple Deprivation 2019 (IMD2019).
- This is an overall measure of multiple deprivation experienced by people living in an area and is calculated for every Lower-layer Super Output Area (LSOA), or neighbourhood, in England. All neighbourhoods in England are then ranked according to their level of deprivation relative to that of other areas.
- High ranking LSOAs or neighbourhoods can be referred to as the 'most deprived' or as being 'highly deprived' to aid interpretation. However, there is no definitive threshold above which an area is described as 'deprived'.
- The Indices of Deprivation measure deprivation on a *relative* rather than an *absolute* scale, so a neighbourhood ranked 100th is more deprived than a neighbourhood ranked 200th, but this does not mean it is twice as deprived.

Deprivation of Oadby and Wigston

Broadly speaking, according to the latest data from IMD 2019 the map shows Oadby has much fewer areas classified in the most deprived areas nationally compared to Wigston. There are five LSOAs in Oadby and Wigston that are in the 30% most deprived areas nationally, all five are in Wigston.



Higher deprivation leads to a lower life expectancy and lower deprivation leads to higher life expectancy

Average Overall Deprivation Score 2019

Indices of Multiple Deprivation Scores in 2019 show a wide range of deprivation within Oadby, Wigston and South Wigston. The higher the score the more deprived the area.

South Wigston has a much higher deprivation score than the district and county and is slightly higher than England overall.

Indicator	Oadby	Wigston	South Wigston	Oadby & Wigston	Leicestershire	England
IMD 2019 score	N/A	N/A	22.3	13.0	12.3	21.7

~ Page 14 ~

English Indices of Deprivation Domains, 2019 (%):

Indicator	Oadby	Wigston	South Wigston	Oadby & Wigston	England
Income deprivation	6.7	9.1	13.2	8.6	12.9
Child poverty	7.6	12.8	20.9	11.8	17.1
Older people in deprivation	11.0	10.3	11.7	10.7	14.2

Significantly higher than England	
Not significantly different to England	
Significantly lower than England	

- Oadby and Wigston separately and as a district are both **significantly better** than England for all three domains of IMD.
- South Wigston is **significantly worse** than England for the Child poverty domain, **significantly better** than England for Older people in deprivation and not statistically different for Income deprivation.

Wider determinants

	Indicator	Oadby	Wigston	South Wigston	England
Housing and Living	Fuel Poverty, 2018 (%)	8.8	8.8	9.2	10.3
	Older people living alone, 2011 (%)	27.0	28.4	30.0	31.5
	Overcrowded houses, 2011 (%)	3.7	4.6	5.5	8.7

Housing and Living

- All areas are lower (better*) for fuel poverty. Although there are differences between the areas no statistical significance was measured
- For older people living alone Oadby and Wigston were lower than England but South Wigston was similar.
- For overcrowded houses all areas were lower than England.

Significantly higher than England	
Not significantly different to England	
Significantly lower than England	

Emergency Hospital admissions

- Oadby compares well against England with admissions for all causes and COPD being significantly lower (better) than England but is significantly higher (worse) for MI
- Wigston is significantly lower (better) for CHD but significantly higher (worse) for all causes and COPD
- South Wigston is significantly higher (worse) for all causes, stroke and COPD

~ Page 16 ~

Indicator	Time Period	Oadby	Wigston	South Wigston	England
Emergency hospital admissions for all causes	2015/16 to 2019/20	96.0	109.0	126.0	100
Emergency hospital admissions for CHD	2015/16 to 2019/20	102.3	82.4	116.1	100
Emergency hospital admissions for stroke	2015/16 to 2019/20	95.7	109.2	134.8	100
Emergency hospital admissions for MI	2015/16 to 2019/20	119.7	95.4	127.0	100
Emergency hospital admissions for COPD	2015/16 to 2019/20	72.0	135.2	222.4	100

Significantly higher than England	
Not significantly different to England	
Significantly lower than England	

Please note these are Standardised Admission Rates (SAR's) and can only be compared to England and not each other

Source: Office for Health Improvement & Disparities (OHID), NHS Digital © Copyright 2021

Mortality (all ages)

- Oadby compares well against England with mortality for all causes, all cancer, all circulatory disease, respiratory diseases and causes considered preventable being significantly lower (better) than England
- Wigston is similar to England apart from performing significantly lower (better) for respiratory diseases
- South Wigston is significantly higher (worse) for all causes and causes considered preventable

~ Page 17 ~

Indicator	Time Period	Oadby	Wigston	South Wigston	England
All causes	2015 to 2019	83.7	97.6	112.1	100
All cancer	2015 to 2019	76.6	99.4	114.1	100
All circulatory disease	2015 to 2019	80.9	94.3	104.4	100
Coronary heart disease	2015 to 2019	83.9	95.3	106.9	100
Stroke	2015 to 2019	79.4	84.8	83.6	100
Respiratory diseases	2015 to 2019	77.6	85.0	109.6	100
Causes considered preventable	2015 to 2019	65.9	104.7	161.6	100

Significantly higher than England	
Not significantly different to England	
Significantly lower than England	

Please note these are Standardised Mortality Rates (SMR's) and can only be compared to England and not each other

Premature Mortality (less than 75 years)

- Oadby compares well against England with mortality for all causes, all cancer and all circulatory disease being significantly lower (better) than England
- Wigston is statistically similar to England for all indicators
- South Wigston is significantly higher (worse) for all indicators

~ Page 18 ~

Indicator	Time Period	Oadby	Wigston	South Wigston	England
All causes, aged under 75	2015 to 2019	76.8	101.9	125.4	100
All cancer, aged under 75	2015 to 2019	77.2	107.6	136.7	100
All circulatory disease, aged under 75	2015 to 2019	63.6	110.7	154.1	100

Significantly higher than England	
Not significantly different to England	
Significantly lower than England	

Please note these are Standardised Mortality Rates (SMR's) and can only be compared to England and not each other

Source: Public Health England, produced from ONS data Copyright © 2021

Teenage Pregnancy

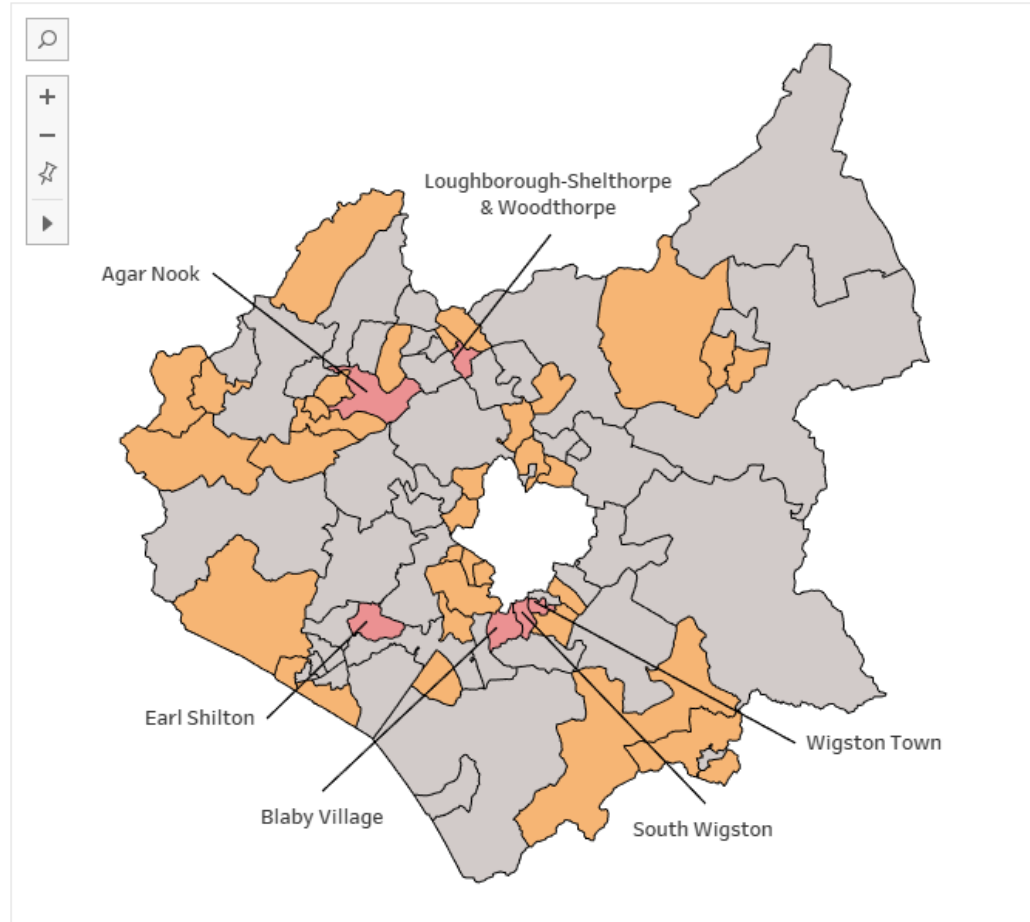
Teenage pregnancy hotspots in 2016-18

Comparison to the National Conception Rate



National Significance
■ Significantly Higher than England/Leicestershire average ■ Similar to England/Leicestershire average

Comparison to the Leicestershire Conception Rate



■ Suppressed

Designed by: Strategic Business Intelligence Team, Leicestershire County Council

Source: Office of National Statistics

Any questions?

Kajal Lad
Public Health Business Partner
Business Intelligence

kajal.lad@leics.gov.uk